



**Medway  
Safeguarding  
Children Partnership**

Safeguarding Medway's  
children together

# Medway Safeguarding Children Partnership

Local Safeguarding Arrangements

June 2019

Updated December 2022



**Kent  
Police**

*Medway*  
COUNCIL  
*Serving You*



## Contents

	Page
<b>Foreword</b>	3
<b>Section One – Background</b>	4
<b>Section Two – About Medway</b>	5
<b>Section Three – Developing the new arrangements</b>	6
<b>Section Four – Structure</b>	7
<b>Section Five – Relevant Agencies</b>	10
<b>Section Six – Funding and support arrangements</b>	12
<b>Section Seven – Independent Scrutiny</b>	13
<b>Section Eight – Voice of Children and Families</b>	15
<b>Section Nine – Dispute Resolution and Escalation</b>	16
<b>Section Ten – Thresholds</b>	17
<b>Section Eleven – Learning and Improvement</b>	19
<b>Section Twelve – Training</b>	21
<b>Section Thirteen – Child Death Review Arrangements</b>	22
<b>Section Fourteen - Reporting</b>	23

## Foreword

This document describes the new safeguarding partnership arrangements for children in Medway. These new arrangements are in response to the Children and Social Work Act 2017 and Working Together to Safeguard Children 2018 which replace Local Safeguarding Children Boards (LSCBs) with new local multi agency safeguarding arrangements.

These changes have provided us the opportunity to review and develop the previous partnership arrangements. We want to build on the strengths of the partnership work of the Medway Safeguarding Children Board (MSCB) and develop the scrutiny and challenge functions in the new arrangements.

The purpose of the Medway Safeguarding Children Partnership (MSCP) is to support and enable local organisations and agencies to work together in a system where:

- Children are safeguarded and their welfare promoted
- Partner organisations and agencies collaborate, share, and co-own the vision for how to achieve improved outcomes for vulnerable children
- Organisations and agencies challenge appropriately and hold one another to account effectively
- There is early identification and analysis of new safeguarding issues and emerging threats
- Learning is promoted and embedded in a way that local services for children and families can become more reflective and implement changes to practice
- Information is shared effectively to facilitate more accurate and timely decision making for children and families.

The MSCP is committed to safeguarding and promoting the welfare of all children in Medway. We want Medway to be a place where children are safe from harm in their homes, families and communities and we want to ensure the right service is delivered the first time at the right time.

This cannot be done by one agency or the three safeguarding partners alone. Safeguarding children is the responsibility of everyone.

The MSCP will ensure there is a culture of continuous learning and improvement across the organisations that work together to support staff to be effective in their role, and safeguard and promote the welfare of children, identifying *opportunities to draw on what works and promote good practice*.

**Neil Davies**  
Chief Executive  
Medway Council

**Paul Bentley**  
Chief Executive  
Kent and Medway ICB

**Peter Ayling**  
Assistant Chief Constable  
Kent Police

## Section One – Background

The Children and Social Work Act 2017 introduced a new duty to be placed on three agencies, namely the Local Authority, the Chief Officer of Police and NHS Kent and Medway (referred to as Safeguarding Partners), to make arrangements for safeguarding and promoting the welfare of children in the area.

Working Together to Safeguard Children (2018) was published in July 2018 setting out:

- the three safeguarding partners should agree on ways to co-ordinate their safeguarding services; act as a strategic leadership group in supporting and engaging others; and implement local and national learning including from serious child safeguarding incidents.
- to fulfil this role, the three safeguarding partners must set out how they will work together and with any relevant agencies: and
- all three safeguarding partners have equal and joint responsibility for local safeguarding arrangements.

The three safeguarding partners have until 29 June 2019 to publish their arrangements and must notify the Secretary of State for Education when they have done so. They then have until 29 September 2019 to implement them. The arrangements will replace the Medway Safeguarding Children Board (MSCB).

As part of the new arrangements, the three safeguarding partners must set out how they will work with the relevant agencies and schools, colleges, and other educational providers.

*“The three safeguarding partners must set out how they will work together and with any relevant agencies whose involvement they consider may be required to safeguard and promote the welfare of children in particular agencies. They must also set out how their arrangements will receive independent scrutiny” (Working Together, 2018)*

## Section Two – About Medway

Medway is an emerging city set around the River Medway within the Thames Gateway Growth Area. There are 5 main towns in the area: Chatham, Gillingham, Rochester, Strood and Rainham, as well as significant rural areas.

In June 2018 the Office for National Statistics released the mid 2017 population estimates, which reflect the population as of 30 June 2017. The latest mid-year estimate indicates that the population of Medway reached 277,616 in June 2017 – 659 persons (0.2%) above the revised 2016 mid-year figure. The latest annual growth rate is below annual growth levels over the past five years from a peak in 2012. With the release of the 2017 mid-year estimate, Medway's population estimate has been revised downwards. Between 2015 and 2017 Medway's population grew by a lower percentage than nationally, regionally and across Kent. Natural growth remains Medway's main source of growth, however significant outward migration from Medway has resulted in a relatively low level of annual growth in 2017.

Most of the population (89.6%) in Medway are classified as White, with the next largest ethnic group being Asian or Asian British (5.2%) including Chinese. The proportion of the population that is White is slightly larger than in England and slightly lower than in Kent, although these differences are not significant. There are also no significant differences in ethnicity by gender. Data from the January 2017 school census show that 75.4% of pupils in Medway are White British and 23.9% of pupils are of minority ethnic origins. This may suggest a large change in the overall population distribution in Medway since the 2011 Census. Some wards are considerably more diverse than others. The three wards with the most ethnically diverse school populations are Chatham Central, Rochester East, and Gillingham North. Within these wards 53.8% to 62.9% of pupils are White British and at least 36.6% of pupils are of minority ethnic origins. Rainham South, Peninsula, and Cuxton and Halling are amongst the wards with the most homogenous school populations, as 86.7% to 89.1% of pupils are White British.

Out of the 325 local authorities in the country, Medway was 207<sup>th</sup> in terms of deprivation score, worse than when it was last recorded in 2010 (189<sup>th</sup>).

Children and young people under the age of 20 years make up 25.4% of the population of Medway.

Overall, comparing local indicators with England averages, the health and wellbeing of children in Medway is mixed. The infant mortality rate is similar to England with an average of 14 infants dying before age 1 each year.

The level of child poverty is worse than England with 18.5% of children aged under 16 years living in poverty. The rate of family homelessness is worse than the England average.

## **Section Three – Developing the new arrangements**

Safeguarding children in Medway has previously been led by the Medway Safeguarding Children Board (MSCB). The MSCB was set up under the requirements of the Children Act 2004 and was the key statutory mechanism for agreeing how the relevant organisations in Medway co-operated to safeguard and promote the welfare of children in Medway.

Following the publication of Working Together to Safeguard Children 2018, the three safeguarding partners for Medway, Medway Council, Kent Police and NHS Kent and Medway) set up planning meetings from 1<sup>st</sup> July 2022 to develop the new arrangements for Medway.

All three safeguarding partners attended the Department for Education (DfE) conference on 22 November 2018 around implementing the new arrangements and learning from the Early Adopter sites.

A joint meeting was held with the safeguarding partners from both Kent and Medway. The proposals made at that meeting have been included in the arrangements below but include:

- There will be separate Safeguarding Partnership arrangements for both Medway and Kent.
- There will be some joint subgroups which will cover both Kent and Medway. These joint subgroups will exist where they will support shared learning across both Kent and Medway, cut down on duplication of meetings and enable Partners' resources to be used more effectively. It will be important that the terms of reference and membership of these groups are clear to ensure that the issues for both areas are equally represented through the work of the subgroups.
- The new partnerships for Kent and Medway will continue to work closely together and to jointly coordinate activities where it is of benefit and where it will support agencies who work across both areas (e.g., in the coordination of submissions for Section 11 audits).

The MSCP will commence on 2 September 2019. A transition plan has been developed to ensure that all the ongoing Serious Case Reviews and Learning Lessons Reviews are handed over to the Safeguarding Partners on 2 September 2019.

In accordance with Working Together to Safeguard Children 2018, arrangements have been made for the handover of all relevant data and information held by the MSCB to the MSCP.

## Section Four – Structure

**Geographical Area** – The area covered by the arrangements is defined by the Medway local authority boundary. The MSCP will cover Medway specifically but within the arrangements there will be some areas of joint working with Kent, particularly where the nature of exploitation, and expertise to combat this is best shared.

**Three Safeguarding Partners** - Medway's arrangements will be led by the three named statutory partners, Medway Council, Kent Police and NHS Kent and Medway. Working Together 2018 names the lead representatives from each of the three Safeguarding Partners as the Local Authority Chief Executive, the Accountable Officer of NHS Kent and Medway, and a Chief Officer of Police.

In Medway, the senior officers with responsibility for the three Safeguarding Partners are:

<b>Lee-Anne Farach</b>	<b>Director of People – Children and Adults Services</b>	<b>Medway Council</b>
<b>Dame Eileen Sills</b>	<b>Chief Nurse</b>	<b>NHS Kent &amp; Medway</b>
<b>Tracey Harman</b>	<b>Assistant Chief Constable</b>	<b>Kent Police</b>

The structure chart sets out the safeguarding partnership arrangements for Medway.

**MSCP Executive:** The MSCP Executive will be the main business forum ensuring that the partnership maintains its focus on the strategic priorities that impact on safeguarding and promoting the welfare of children in Medway. The Executive will be led by the three safeguarding partners – Police, NHS Kent and Medway and Local Authority. The Executive will be jointly chaired by the three partners on a rotational basis and will meet every two months. Ian Sutherland, Director of People – Children and Adults Services, Medway Council will chair the Executive for the first year. Andrew Pritchard, Chief Superintendent, Kent Police will chair the Executive for year two and Paula Wilkins, Chief Nurse, NHS Kent and Medway will chair the Executive in year three. The current chair is Dr Leanne Farach, Director of People – Children and Adult Services, Medway Council.

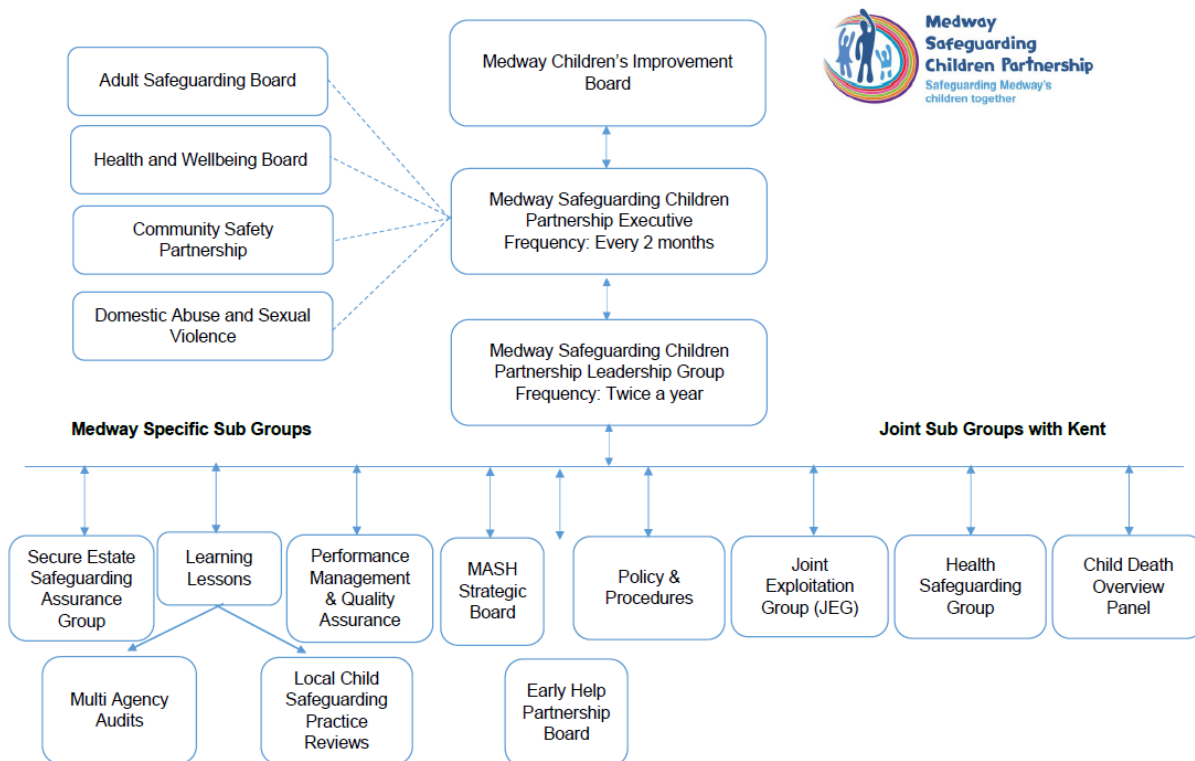
The main objective of the MSCP Executive is to ensure that the functions of the safeguarding partners and relevant agencies are effectively discharged in accordance with the requirements set out in Working Together 2018.

Membership of the MSCP Executive will include:

- Director of People – Children and Adult Services, Medway Council
- Deputy Director – Children and Adults, Medway Council
- Head of Service, Safeguarding and Quality Assurance, Medway Council
- Chief Nurse, NHS Kent and Medway
- Deputy Chief Nurse, NHS Kent and Medway

- Assistant Chief Constable, Kent Police
- Detective Superintendent, Kent Police
- Medway Secondary Head teacher representative
- Medway Primary Head teacher representative
- MSCP Business Manager

Subgroup chairs will attend Executive meetings to present update reports.



**MSCP Leadership Group:** The Medway Safeguarding Children Partnership Leadership Group will replace the Medway Safeguarding Children Board (MSCB) Main Board. The Leadership Group will be run as twice-yearly Safeguarding Conferences, half day conferences given over to one or at most two topics as determined by the Executive. The Leadership Group will be held twice a year.

**Subgroup Structure:** The agreed subgroup structure is set out below. Terms of Reference for each of the subgroups will be published including chairing arrangements, Membership, frequency of meetings etc.

### Medway Specific Subgroups

- Secure Estate Safeguarding Assurance
- Performance Management and Quality Assurance (PMQA)
- Case File Audit Group (CFAG)
- Learning Lessons
- MASH Strategic Board
- Early Help Partnership Board



## **Joint Subgroups with Kent**

- Policy and Procedures
- Joint Exploitation Group (JEG)
- Health Safeguarding Group

**Relationship between key strategic boards in Medway** - There are several strategic boards and partnerships, with complementary roles and functions, all of which have a role in relation to safeguarding.

A joint working protocol was agreed in 2014 and subsequently revised in 2017 which set out a framework for effective joint working between the Medway Safeguarding Children Board, the Medway Health and Wellbeing Board, Kent and Medway Safeguarding Adult Board and the Medway Community Safety Partnership. This protocol sets out an expectation that each named strategic board would have the opportunity to see, comment on and challenge the safeguarding priorities of other strategic bodies and be updated on progress on their work.

The Protocol was updated in 2020.

## Section Five – Relevant Agencies

Relevant agencies are those organisations and agencies whose involvement the safeguarding partners consider is required to safeguard and promote the welfare of local children. The relevant agencies for Medway have been chosen as organisations and agencies that can work in a collaborative way to provide targeted support to children and families as appropriate. The Safeguarding Partners will regularly review the list of relevant agencies. The list of relevant agencies and how they will be engaged in the MSCP is set out below:

<b>Agency</b>	<b>How they will be involved?</b>
<b>Probation</b>	
National Probation Service	Leadership Group; Subgroups
<b>Health</b>	
Kent and Medway Partnership Trust (KMPT)	Leadership Group; Subgroups
NHS England	Leadership Group; Subgroups
Medway NHS Foundation Trust	Leadership Group; Subgroups
NELFT	Leadership Group; Subgroups
Kent Community Health NHS Foundation Trust (KCHFT)	Leadership Group; Subgroups
Medway Community Healthcare (MCH)	Leadership Group; Subgroups
Open Road	Leadership Group; Subgroups
Turning Point	Leadership Group; Subgroups
<b>Education</b>	
Medway Primary Schools	Executive; Leadership Group; Engagement through Medway Educational Leaders Association (MELA)
Medway Secondary Schools	Executive; Leadership Group; Engagement through Medway Secondary Heads Association (MSHA)
Mid Kent College	Leadership Group
Medway Independent Schools	Leadership Group
Early Years Providers	Leadership Group
<b>Secure Estate</b>	
Oasis Restore (when set up)	Leadership Group; Subgroups; Secure Estate Subgroup
HMYOI Cookham Wood	Leadership Group; Subgroups; Secure Estate Subgroup
<b>Voluntary Sector</b>	
Medway Voluntary Action (MVA)	Leadership Group; Subgroups
MY Trust	Leadership Group; Subgroups
NSPCC	Leadership Group; Subgroups
<b>Other Agencies</b>	
Medway Youth Offending Team (YOT)	Leadership Group; Subgroups
Medway Council - Public Health	Leadership Group; Subgroups
Kent Fire and Rescue Service	Leadership Group; Subgroups
CAFCASS	Leadership Group; Subgroups
British Transport Police	Leadership Group
Housing Providers	Leadership Group
Children's Homes	Leadership Group

Sports Groups/ Associations	Leadership Group
Faith Groups	Leadership Group

**Schools, colleges, and other education providers** – As detailed in the statutory guidance Keeping Children Safe in Education 2018, schools, colleges, and other educational providers play a pivotal role in safeguarding and promoting the welfare of children, and as such their engagement in partnership arrangements is important. As defined by their duties under Section 40 of the Childcare Act 2006 early years providers play a crucial role in safeguarding and promoting the welfare of children.

The MSCP will work with schools through the Medway Education Leaders Association (MELA), formed of Medway's primary schools and Medway Secondary Heads Association (MSHA) to ensure safeguarding issues are communicated effectively to all educational establishments and to develop assurance arrangements on the effectiveness of safeguarding arrangements in educational establishments.

**Residential homes for children** – The MSCP will engage directly with children's homes providers for Medway through the Leadership group, multi-agency training and audit process. Initial meetings will be scheduled for September 2019.

The MSCP will engage with supported accommodation providers in Medway through the existing Supported Accommodation Provider Forums.

**Youth Custody** – The MSCP will have a Secure Estate Safeguarding Assurance subgroup which will report into the MSCP Executive. The subgroup will include the three safeguarding partners, the Governors of both establishments and representatives from other agencies with responsibilities for children within the two establishments. In addition, HMYOI Cookham Wood will be members of the Leadership group and other relevant subgroups. The independent scrutiny arrangements will also include a specific function for the secure estates.

## **Section Six – Funding and support arrangements**

The work of the MSCP will be supported by a staff team hosted by Medway Council. This continues the same arrangements used for the Safeguarding Children Board and will support the transition to the new partnership.

The safeguarding partners are committed to equitable and proportionate funding of the MSCP. The safeguarding partners and relevant agencies that were members of the Safeguarding Children Board have agreed to maintain their existing financial contributions for future years. The funding will contribute to the costs associated with the implementation of the new partnership. The safeguarding partners will undertake a review of the funding arrangements following the transition to the new arrangements.

## Section Seven – Independent Scrutiny

The role of independent scrutiny is to provide assurance, through monitoring and challenge, in judging the effectiveness and quality of multi-agency arrangements to safeguard and promote the welfare of all children in a local area. This is undertaken through objective scrutiny, acting as a constructive critical friend, promoting reflection to drive improvements, and reporting how well the safeguarding partners are providing strong leadership to fulfil their safeguarding children role.

The Independent Scrutiny role for the MSCP will also include specific elements of scrutiny of the safeguarding arrangements for the children's secure estate in Medway (HMYOI Cookham Wood, and Oasis Restore Secure School).

An Independent Scrutineer will be appointed by the Safeguarding Partners. Their role will be to attend the Quality Assurance and Learning Lessons subgroup meetings and provide a scrutiny role around:

- Learning from and action plans for local child safeguarding practice reviews and Case File audits,
- How the partnership uses data, and
- Outcome of audits – both multi agency and single agency.

The Independent Scrutineer will review the MSCP annual report and will comment on this in a section of the plan. The Independent Scrutineer will also attend at regular intervals the Executive Group and the Leadership Group to present progress reports, and at least annually the Local Authority Oversight and Scrutiny Committee.

The Independent Scrutineer will also be consulted as part of the decision making around proposed Case and Practice Reviews and will have a direct line of sight to frontline practice in all agencies involved in safeguarding children in Medway.

At all times the Independent Scrutineer will give particular attention to ensuring that the voice of the child is at the heart of all aspects of scrutiny.

The MSCP intend to collaborate with the Kent Safeguarding Children's Multiagency Partnership (KSCMP) on possible joint arrangements in relation to the role of the independent scrutineer.

Independent Scrutiny of Secure Estate –The independent scrutiny arrangements for the MSCP also include a specific function for the secure estates. This will include the appointment of an Independent Scrutineer to undertake independent scrutiny of the safeguarding arrangements within the secure establishments in Medway. This will include:

- Attending quarterly Secure Estate Quality Assurance meetings,
- Maintaining regular contact with key individuals involved in safeguarding (e.g., Local Authority Designated Officer, Head of Safeguarding in the establishments, other parties)

- Undertaking periodic visits to Cookham Wood and Oasis Restore Secure School.

The Independent Scrutineer will oversee the conduct of the annual 'Review of Safeguarding and Restraint' in the establishments and will report the outcome of this to the MSCP Executive as well as to HM Government.

This arrangement may subsequently be amended depending on the outcome of a national review of safeguarding being undertaken by the Ministry of Justice (MoJ).

## **Section Eight – Voice of Children and Families**

The MSCP will ensure that children and families have the opportunity to engage in the work of the partnership and offer their views on the support they are provided in Medway.

We will work closely with existing forums but also seek opportunities through audits to hear the voice of children and families. The MSCP will engage with existing forums like the Medway Youth Council and the Medway Children and Young People Council. The Partnership will particularly seek the views of children and families in the following areas of work:

- Audit work will include a focus on how children and families have been included in the planning for children.
- The voice of the child will be incorporated into MSCP multi agency training.
- The MSCP will engage with young people on specific areas of work including the development of the MSCP website.
- All relevant agencies will be asked to report on how they ensure the “voice of the child”, and families’ views are captured and used to inform individual case decisions, plans and the planning and development of services.

At all times the Independent Scrutineer will give particular attention to ensuring that the voice of the child is at the heart of all aspects of scrutiny.

## **Section Nine – Dispute Resolution and Escalation**

Generally, there is a good working relationship between agencies, but occasionally situations arise when workers within one agency feel that the actions, inaction, or decisions of another agency do not adequately safeguard a child. Disagreements may arise around:

- Levels of need/ thresholds
- Roles and responsibilities
- Progressing plans
- Communication

Effective working together depends on an open approach and honest relationships between agencies. All professionals have a duty to act assertively and proactively to ensure that a child's welfare is the paramount consideration in all professional activity. Therefore, all professionals must challenge the practice of other professionals where they are concerned that this practice is placing children at risk of harm.

The MSCP will publish an Escalation Policy to provide professionals with clear routes to escalate concerns so that agencies can agree a way forward. The policy will set out clear routes to escalate professional concerns where there are professional disputes or where the actions, inactions or decisions of another agency may be getting in the way of keeping a child safe.

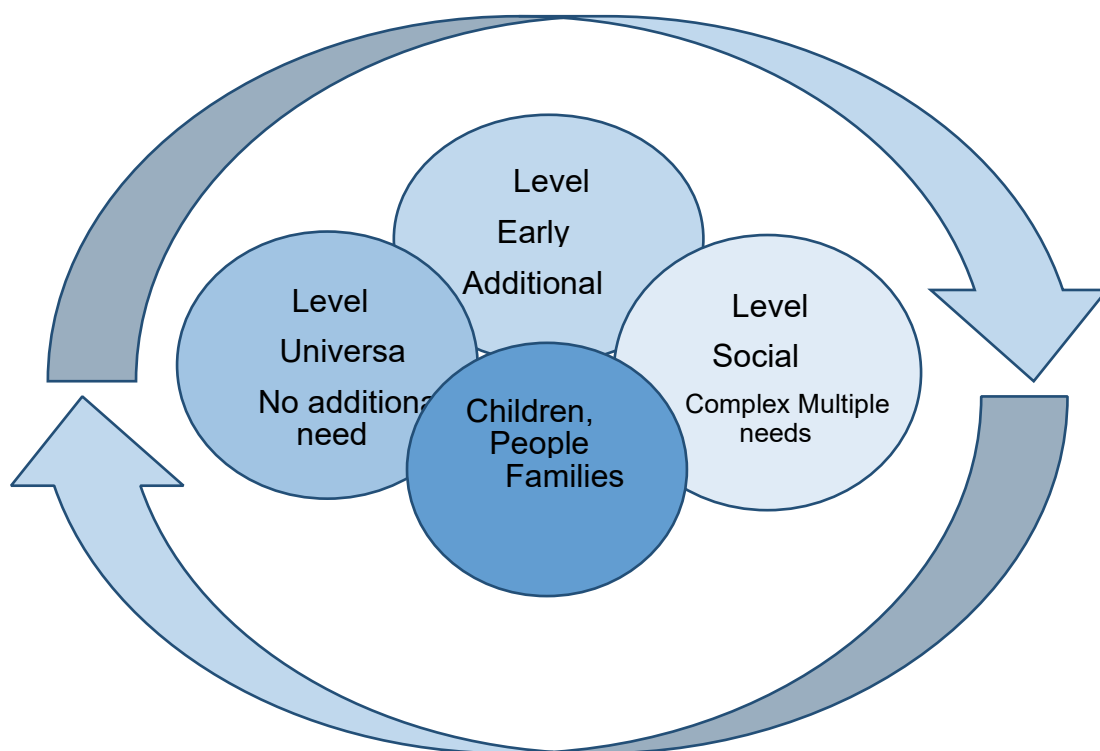


## Section Ten - Thresholds

Children's needs vary at different times and in different circumstances and Intervention needs to be based on a clear and consistent understanding of need. This requires all practitioners, across the partnership including those providing services to adults with children, to understand their role in identifying emerging problems and to share information with other practitioners to support early identification and assessment. In Medway we have therefore constructed a continuum of need to identify the right support at the right time. The diagram below summarises this. We recognise that at different times families' needs may change and so they may move between levels. The continuum of need is therefore not a linear approach but a cycle, illustrating how needs and support can change.

### Continuum of Need

The level of support can change in line with the level of need.



The Medway Threshold Guidance 'A multi-agency guide to assess levels of need and identifying the most appropriate support in Medway' and introductory threshold video can be accessed [here](#).

Professionals who have concerns regarding young people are advised to use Medway's threshold guidance to support them to assess the right level of need.

All contacts and referrals for statutory intervention, safeguarding concerns and Early Help must be made through First Response into the Single Point of Access via the online portal.

The form should be used to make a written referral for all concerns that fall within the partnership threshold document as: • Level 3 Statutory Intervention, safeguarding concerns • Level 2 Early Help response on all single or multi-agency coordination needs. (Please tick the EH box on the contact and referral form to indicate this is an Early Help Request)

Using this form will help make sure the response to contact and referrals are effective as possible. **Immediate safeguarding concerns should always be made by telephone to 01634 334466**

<https://www.medwayscp.org.uk/mscb/info/5/mscb-1/34/worried-child>

## Section Eleven – Quality Assurance and Learning and Improvement

The MSCP is a learning organisation where 'Learning is a habit not a goal' and supports the development of Medway professionals.

The MSCP will publish a Quality Assurance Framework. The implementation of the framework will be undertaken by the Quality Assurance and Learning Lessons subgroups. The framework will focus on scrutiny and challenge to partners and have a focus on the impact for children and families. The assurance activity will include:

- A multi-agency dataset to monitor performance.
- Multi agency and single agency case file audits.
- Local Child Safeguarding Practice Reviews.
- Section 11 Audits.
- Independent Scrutineer Evaluation

The Independent Scrutineer will provide a scrutiny role around:

- Learning from and action plans for Local Child Safeguarding Practice Reviews and Case Audits.
- How the partnership uses data; and
- Outcome of audits – both multi agency and single agency

**Multi Agency Audits** - The MSCP will undertake themed multi agency audits through the case file audit group. The MSCP will agree a schedule of themed audits to monitor performance, and to identify good practice and multi-agency learning. The learning lessons subgroup will be responsible for monitoring the action plans that come from the audits and driving change.

**The use of data and intelligence** – The MSCP will use data to assess the effectiveness of the help being provided to children and families in Medway. The safeguarding partners and relevant agencies will provide data on a quarterly basis which will be scrutinised by and be subject to regular review by the Quality Assurance subgroup. The dataset will include national and local comparator figures alongside an analysis of the data. The Quality Assurance subgroup will report to the Executive on the performance data.

**Local Child Safeguarding Practice Reviews** – The purpose of reviews of serious child safeguarding cases, at both local and national level, is to identify improvements to be made to safeguard and promote the welfare of children.

The MSCP will have in place a case file referral process which will enable the safeguarding partners and relevant agencies to identify and review serious child safeguarding cases which raise issues of importance in relation to Medway. The MSCP will commission and oversee the review of these cases where they consider it appropriate for a review to be undertaken. The case file referral process will be published on the MSCP website.

On being informed of a notifiable incident, the MSCP will undertake a Rapid Review in line with published guidance in Working Together 2018, to make decisions and to inform the National Child Safeguarding Practice Review Panel about the decision to undertake a local child safeguarding practice review or not. The Rapid Review will be undertaken by a panel nominated by the safeguarding partners. The Independent Scrutineer will be consulted as part of the decision-making process.

Where a decision is made to undertake a local child safeguarding practice review, a reviewer will be appointed. Reviews will be published on the MSCP website as outlined in Chapter 4 of Working Together 2018. Exceptions to publication will be discussed and agreed with the Child Safeguarding Practice Review Panel.

The Learning Lessons subgroup will be responsible for the effective dissemination of learning from local and national child safeguarding practice reviews and for monitoring the implementation of recommendations from reviews to ensure lessons are learnt, improvements are sustained, and they impact on improving outcomes for children. The MSCP will facilitate learning sessions to ensure the learning from national and local child safeguarding practice reviews as well as multi agency audits is readily accessible to practitioners.

## Section Twelve – Training

One of the most immediate ways in which the MSCP can influence the effectiveness of safeguarding in Medway is through running a range of multi-agency safeguarding training sessions for professionals.

The Safeguarding partners are committed to ensuring there is a consistent approach to multi agency training and will publish a Safeguarding Children Competency Framework which will set out the minimum standards of learning/knowledge expected from professionals or volunteers in Medway who come into contact with children whether through direct or indirect and un-regular work.

The Competency Framework identifies staff working at five different levels:

- Level 1 – Staff in infrequent contact with children and young people and/or parents/ carers
- Level 2 – Those in regular or in intensive but irregular contact with children, young people and/or parents/carers. Those who work predominantly with children, young people and/or parents/ carers
- Level 3 – Those who have particular specialist child protection responsibilities
- Level 4 – Operational managers of services for children, young people and /or parents / carers. Specialist Professional advisers and designated leads for child protection.
- Level 5 - Strategic Leads responsible for the strategic management/ development of services

The MSCP will provide an annual multi agency safeguarding children training programme which will include a combination of full and half day training courses as well as shorter specialist workshops, conference sessions and e-learning. The training programme will be informed by learning from national and local child safeguarding practice reviews, child death reviews and multi-agency audits.

The safeguarding partners will undertake regular evaluation of the impact of the training and learning on frontline practice.

## **Section Thirteen – Child Death Review Arrangements**

The responsibility for ensuring child death reviews is carried out is held by Child Death Review Partners who are defined as the Local Authority for the area and NHS Kent and Medway operating in the Local Authority Areas.

The child death review partners have reviewed their structures and processes and have agreed new arrangements which give them the basis for meeting the requirements. The previous Medway Child Death Overview Panel (CDOP) will merge with Kent to become the Kent and Medway Child Death Overview Panel (CDOP). The Child Death Overview Panel is accountable to the Child Death Review Partners through the Medway Safeguarding Children Partnership. The child death review partners will publish a joint Kent and Medway arrangements document.

## Section Fourteen - Reporting

The Safeguarding Partners will publish an annual report which will set out what has been achieved through the partnership, how effective arrangements have been in practice and what action has been taken as a result of child safeguarding practice reviews. The report will also include:

- Evidence of the impact of the work of the safeguarding partners and relevant agencies, including training, on outcomes for children and families from early help to looked-after children and care leavers
- An analysis of any areas where there has been little or no evidence of progress on agreed priorities
- A record of decisions and actions taken by the partners in the report's period (or planned to be taken) to implement the recommendations of any local and national child safeguarding practice reviews, including any resulting improvements
- Ways in which the partners have sought and utilised feedback from children and families to inform their work and influence service provision
- A section by the Independent Scrutineer

In accordance with the joint working protocol with key strategic partnerships in Medway, the annual report will be presented to the Medway Health and Wellbeing Board, Kent and Medway Safeguarding Adult Board and the Medway Community Safety Partnership.

The report will be published on the Medway Safeguarding Children Partnership website ([www.medwayscp.org.uk](http://www.medwayscp.org.uk)) and a copy sent to the Child Safeguarding Practice Review Panel and the What Works Centre for Children's Social Care.

The Safeguarding Partners will also publish an annual review of restraint and safeguarding within the Secure Estates in Medway. The Independent Scrutineer will oversee the conduct of the annual review. A copy of the report will also be sent to the Youth Justice Board.